

Indicative Planting Mixes						
Latin Name	Common Name	Mix %	Height/girth	Age	Root Container	Form
Tree Mix						
Planted through or adjacent to the field boundary edges as shown						
<i>Alnus glutinosa</i>	Alder	20	350-400cm	3x	RB	Feathered
<i>Prunus padus</i>	Bird Cherry	15	300-350cm	2x	BR	Feathered
<i>Quercus petraea</i>	Sessile Oak	20	350-400cm	3x	RB	Feathered
<i>Malus sylvestris</i>	Crab Apple	20	350-400cm	3x	RB	Feathered
<i>Sorbus aria</i>	Whitebeam	25	350-400cm	3x	RB	Feathered
Hedgerow Mix						
Planted as double staggered rows at 6 per metre and spacing of 300-400mm between rows or as individual whips planting through existing gaps as required.						
<i>Corylus avellana</i>	Hazel	8	90-120cm	1+1	BR	Transplant
<i>Crataegus monogyna</i>	Hawthorn	55	120-150cm	1+2	BR	Transplant
<i>Euonymus Europaeus</i>	Spindle	5	60-90cm	1+1	BR	Transplant
<i>Ilex aquifolium</i>	Holly	5	40-60cm		C	
<i>Lonicera periclymenum</i>	Honeysuckle	2	60-90cm	1+1	BR	Transplant
<i>Prunus spinosa</i>	Blackthorn	15	90-120cm	1+1	BR	Transplant
<i>Rosa canina</i>	Dog Rose	3	60-90cm	1+1	BR	Transplant
<i>Viburnum opulus</i>	Guelder Rose	7	60-90cm	1+1	BR	Transplant
Screening Mix						
Planted at 3m ² in groups of no more than 7 of the same species and to consist of the following mix:						
<i>Alnus glutinosa</i>	Alder	20	175-200cm	1+2	BR	Transplant
<i>Corylus avellana</i>	Hazel	15	175-200cm	1+2	BR	Transplant
<i>Crataegus monogyna</i>	Hawthorn	15	150-175cm	1+2	BR	Transplant
<i>Euonymus Europaeus</i>	Spindle	5	90-120cm	1+1	BR	Transplant
<i>Ilex aquifolium</i>	Holly	5	60-80cm	3L	C	
<i>Quercus petraea</i>	Sessile Oak	10	150-175cm	1+2	BR	Transplant
<i>Sambucus nigra</i>	Elderberry	3	60-90cm	1+1	BR	Transplant
<i>Salix cinerea</i>	Grey Willow	10	120-150cm	0+1	BR	Transplant
<i>Sorbus aria</i>	Whitebeam	10	175-200cm	1+2	BR	Transplant
<i>Viburnum opulus</i>	Guelder Rose	7	60-90cm	1+1	BR	Transplant

Indicative Grassland and Wildflower Mixes					
Note: Final parameters chosen to best suit the underlying soil conditions and to be approved by the ecologist.					
Species Rich Grassland Mix					
Sow rate of 20kg/ha.					
Latin Name	Common Name	Mix %	Latin Name	Common Name	Mix %
<i>Agrostis capillaris</i>	Common Bent	4	<i>Cynosurus cristatus</i>	Crested Dog's Tail	4
<i>Festuca rubra</i>	Red Fescue	35	<i>Festuca ovina</i>	Sheep's Fescue	27
<i>Poa pratensis</i>	Smooth Stalked Meadow Grass	15	<i>Poa trivialis</i>	Rough Stalked Meadow Grass	15
Wildflower Mix					
Sow rate of 40kg per ha with 80% grass and 20% wildflower ratio. Wildflowers to be supplied by 'Design by Nature' or other as approved.					
Latin Name	Common Name	Mix %	Latin Name	Common Name	Mix %
<i>Lotus corniculatus</i>	Birds Foot Trefoil	8	<i>Leucanthemum vulgare</i>	Ox-eye Daisy	8
<i>Centaurea nigra</i>	Black Knapweed	5	<i>Silene dioica/latifolia</i>	Red/White Campion	2
<i>Medicago lupulina</i>	Black Medick	3	<i>Trifolium repens</i>	Red Clover	10
<i>Vicia sativa</i>	Common Vetch	4	<i>Prunella vulgaris</i>	Selfheal	5
<i>Galium verum</i>	Lady's Bedstraw	2	<i>Onobrychis vicifolia</i>	Sainfoin	36
<i>Lathyrus pratensis</i>	Meadow Vetchling	3	<i>Achillea millefolium</i>	Yarrow	6
<i>Ranunculus acris</i>	Meadow Buttercup	3	<i>Rhinanthus minor</i>	Yellow Rattle	3
<i>Malva moschata</i>	Musk Mallow	2			

Indicative Wild Bird Seed Mix		
Sow rate of 250kg/ha.		
Latin Name	Common Name	Mix %
<i>Sinapis arvensis</i>	Mustard	10
<i>Triticum spp</i>	Spring Wheat	25
<i>Panicum miliaceum</i>	White Millet	20
<i>Panicum miliaceum</i>	Red Millet	10
<i>xTriticosecale</i>	Triticale	10
<i>Hordeum vulgare L.</i>	Barley	25

Outline Landscape Specifications:

Existing Vegetation:
Any necessary works being undertaken within close proximity and to the retained tree lined hedgerows should be carried out in accordance with BS 3998:2010 Tree work Recommendations, BS 5837:2012 Trees in Relation to Design Demolition and Construction and NUG 4 Guidelines for the Planning, Installation and Maintenance of Utility Apparatus in Proximity to Trees and in consultation with an arborist.

Proposed Planting:
Planting to be supplied in accordance with BS 3936-1:1992 Nursery Stock, specification for trees and shrubs, BS 3926-4:2007 Nursery Stock Specification for forest trees, poplars and willows, BS 6945:2014 Trees from nursery to landscape. All landscaping works to be in accordance with BS428:1989 'General Landscaping Works'. All planting should be source from local provenance certified seed stock where possible with other sources needed to be approved.

Tree Planting:
Trees will be planted into square tree pits 2-3 times the width of root spread and to the depth of root spread. The tree pit's sides are to be loosened, base aerated and later backfilled with the existing excavated subsoil and topsoil. All trees to be supported with a suitable tree guard and staked with adjustable tree ties.

Hedgerow Planting:
Hedging planted into a trench measuring a min of 600mm wide and 300mm deep, allowing enough width and depth for the roots. Short lengths of individual whip infilling may be undertaken by slit planting. The existing soil should be improved by digging in well rotten Farm Yard Manure or other soil improver. All hedging will be supported with rabbit guards and canes and 1m wide mulch matting.

Grassland & Wildflower Planting:
The former arable fields will be sown with a low growing species rich mix of grasses, which will be lightly grazed by sheep or maintained by cutting. The areas of wildflower mix will be separated from this grassland by a stock-proof fencing to prevent any possible grazing by animals.

Timing & Aftercare:
Planting of the hedgerow mix to take place during the months of November to March, preferably before January and at a time when the soil is not frozen or waterlogged. The new plants will be watered in at the time of planting and regularly during their first year. All tree and hedgerow species will have a minimum 1m wide radius free of any weeds until 3 years after planting, when they are well established. Weeding will be done using a mulch mat and either by hand or mechanical control as required in order to prevent competition for nutrients from weeds and grasses.

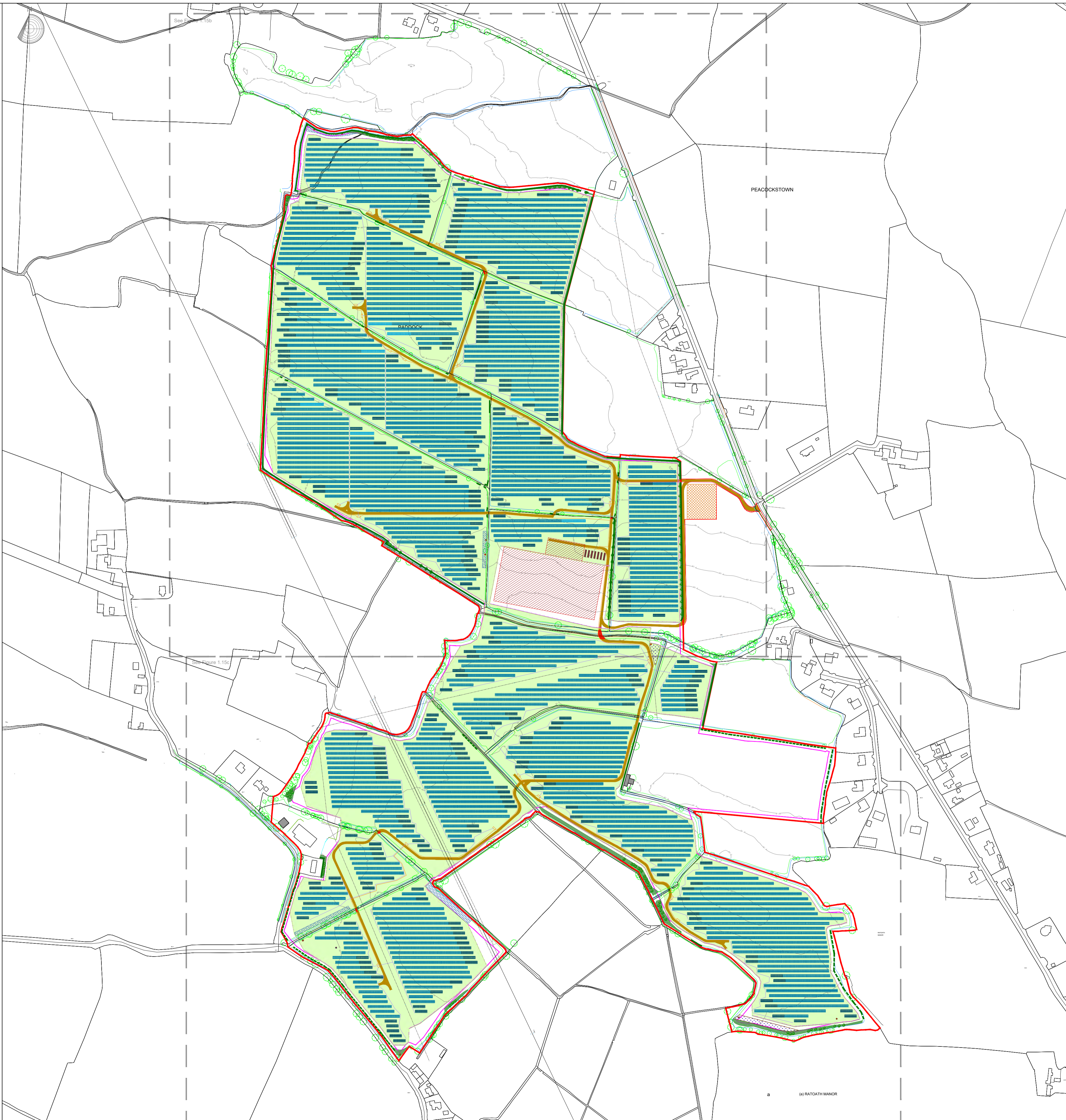
All proposed planting areas will be contained by 1.2m high stock proof fencing to prevent grazing by sheep but allowing access for wildlife. The planting supports and guards will be inspected regularly to ensure they are not impeding the plant's growth and will be adjusted or replaced as required. These will be removed when the planting is established within the initial 3 years.

The new hedgerow planting will be reduced by a third in height immediately after planting hawthorn and blackthorn, with other species lightly pruned and cut later in the first autumn. Pruning will be required in the second year to encourage bushy growth by removing half of the previous year's growth. The plants will be shaped in the third year by trimming both lateral and lead branches. The hedging will be cut on a rotational basis using mechanical methods approximately every 2-3 years and shaped to an 'A' shape. All hedge cutting will be undertaken outside of the nesting bird period (beginning of March to end of August). All hedgerows, once established, to be maintained to a minimum height of 4m.

The grassland will be managed by light grazing or cutting several times in the first year to reduce competition from annual weeds and allow the grass to become established. Weeds may also need treating through spot treatment with an appropriate approved herbicide. In the second year and onwards the grassland can be maintained by a light grazing regime through the year or by cutting. Areas of wildflower mix will similarly need controlling of any initial flushes of weeds and persistent weeds. The wildflower mix will be maintained by an annual cut after they have flowered, with the cut growth allowed to sit to release any seeds prior to the cuttings being removed off site.

Any loss of planting which occurs within 5 years of the initial planting as a result of plant failure will be replaced with the same plant species.

Final locations and number of bird and bat boxes added to the field boundaries to be determined on site by the ecologist.



Key

Landscaping & Ecology Measures

- Existing Field Hedgerow & Trees
- Hedgerow to be removed
- Proposed Tree Planting
- Proposed New Hedgerow Planting
- Indicative Infill Hedgerow Planting
- Proposed Screen Planting
- Proposed Species Rich Grassland
- Proposed Wildflower Meadow Strip
- Proposed Bird Seed Mix
- Proposed Bug Hotel
- Proposed Bee Bank
- Proposed Log Pile

Proposed Site Features

- Development Boundary
- Solar PV Array
- Access Track
- MV Power Station
- Temporary Construction Compound
- Substation (Future Application)
- Fencing
- Battery Storage Container
- CCTV
- Overhead Line

Notes:

See LEMP Figures 1.17b and 1.17c for further details on the proposed planting within the northern and southern ends of the site.

Plan to be read in conjunction with the Indicative Infrastructure layout drawing no. NEO00679_0191_A and BMP report.

© Neo Environmental Limited unless otherwise stated. Do not scale from drawing- use dimensioned figures only. Planning Issue only not for construction. Ordnance Survey Ireland Licence No. EN 0085320 © Ordnance Survey Ireland/Government of Ireland OSI Sheets 2383-A 2383-B 2383-C 2383-D 2445-A 2445-B

Rev	Date	Comments
C	21/05/21	Added mitigation planting to suit revised design.
B	18/09/20	Minor amendment to roadside planting
A	19/08/20	Landscape proposals added to site Layout

neo ENVIRONMENTAL

Kildare Office: T: +353 (0)45 844250 E: info@neo-environmental.ie
 Ballymena Office: T: 02825 650413 E: info@neo-environmental.co.uk
 Warwick Office: T: 01788 297012 E: info@neo-environmental.co.uk
 Head Office: Wright Business Centre, 1 Lomney Road, Glasgow, G33 4EL
 T: 0141 773 8262 E: info@neo-environmental.co.uk

Project: Paddock Solar Farm
Client: Energia Solar Holdings Ltd.
Drawing: Landscape & Ecology Management Plan (LEMP)
Project No.: NEO00679 Figure 1.15a
Drawing No.: NEO00679I_027_01_A
Drawn: RF/NT **Checked:** DD **Approved:** PN
Scale: NTS @ A1 **Revision:** C
Date: September 2020